

N&C

Bohemian



Bohemian Sand

3 colours / 1 Finish / 3 Sizes

Bohemian

Combines a subtle baroque inspired pattern with soft blended tones, designed to be generously aged by time.



Bohemian Blue

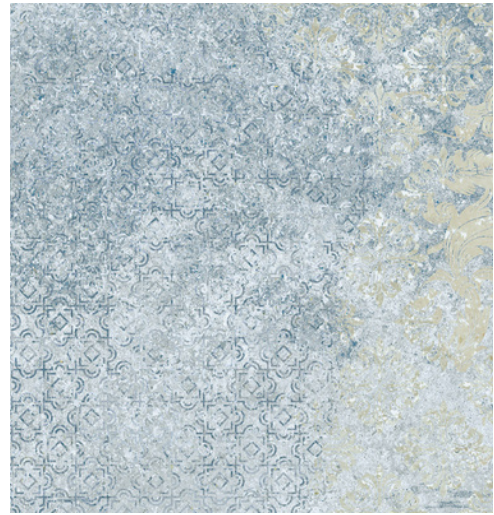
Bohemian

Combines a subtle baroque inspired pattern with soft blended tones, designed to be generously aged by time.



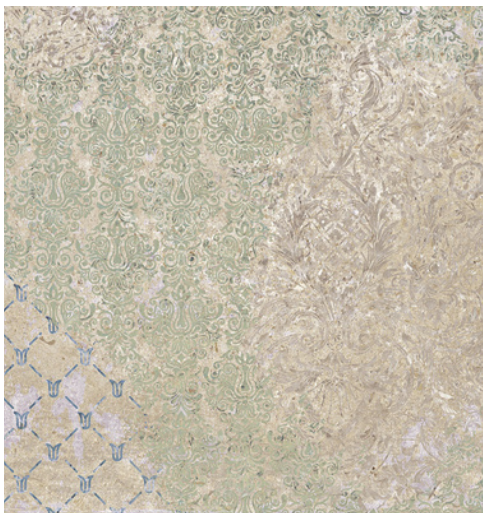
Bohemian Sand

- NB16395 500x1000x10mm
- NB16392 592x592x10mm
- NB16389 1000x1000x10mm



Bohemian Blue

- NB16396 500x1000x10mm
- NB16393 592x592x10mm
- NB16390 1000x1000x10mm



Bohemian Blend Multi

- NB16397 500x1000x10mm
- NB16394 592x592x10mm
- NB16391 1000x1000x10mm



Bohemian (Blend, Blue & Sand)

Technical Specifications Physical properties

	Test of Norm (test standard)	Value of Norm (specification standard)	N&C Value
Slip Resistance (Pendulum Test Values Rating)	BS-7976	-	>36 (Low slip potential)
Water Absorption	ISO 10545-3	ISO 13006-UNE-EN 14411	< 0,5%
Breaking Strength	ISO 10545-4	ISO 13006-UNE-EN 14411	>2300 N
Modulus of Rupture	ISO 10545-4	ISO 13006-UNE-EN 14411	> 40 N/mm ²
Resistance to Abrasion	ISO 10545-7	ISO 13006-UNE-EN 14411	CLASE 4
Length	ISO 10545-2	ISO 13006-UNE-EN 14411	PASS
Width	ISO 10545-2	ISO 13006-UNE-EN 14411	PASS
Thickness	ISO 10545-2	ISO 13006-UNE-EN 14411	PASS
Straightness of Sides	ISO 10545-2	ISO 13006-UNE-EN 14411	PASS
Squareness	ISO 10545-2	ISO 13006-UNE-EN 14411	PASS
Surface Flatness (Edge)	ISO 10545-2	ISO 13006-UNE-EN 14411	PASS
Surface Flatness (Centre)	ISO 10545-2	ISO 13006-UNE-EN 14411	PASS
Surface Flatness (Warpage)	ISO 10545-2	ISO 13006-UNE-EN 14411	PASS
Colour Resistance to Light Exposure	DIN 51094	-	No colour alterations

Chemical Properties

	Test of Norm (test standard)	Value of Norm (specification standard)	N&C Value
Resistance to Acids (weak)	ISO10545-13	ISO 13006-UNE-EN 14411	GLA
Resistance to Acids (strong)	ISO 10545-13	ISO 13006-UNE-EN 14411	GHA
Resistance to House Hold Cleaning Products	ISO 10545-13	ISO 13006-UNE-EN 14411	GA
Resistance to Staining	ISO 10545-14	ISO 13006-UNE-EN 14411	5